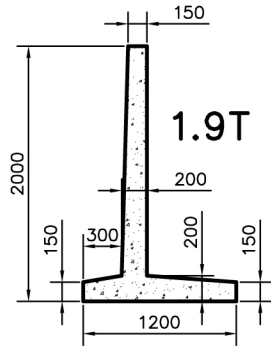
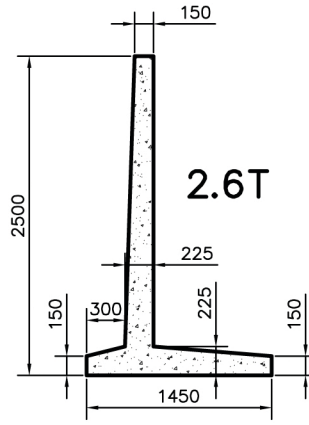


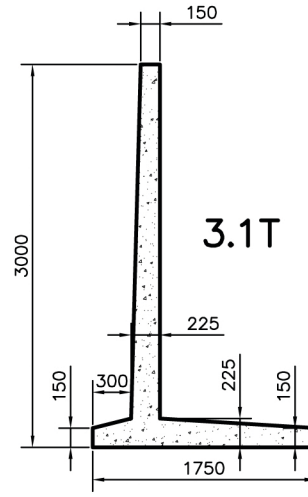
Retaining Wall Type 1



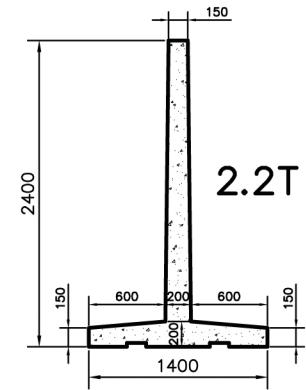
Retaining Wall Type 2



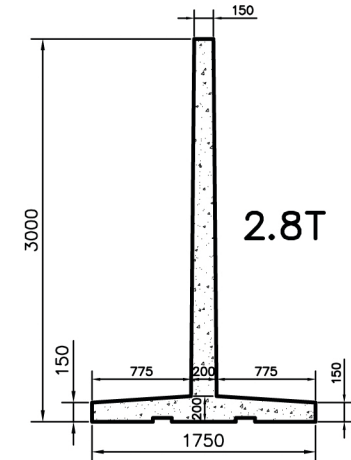
Retaining Wall Type 3



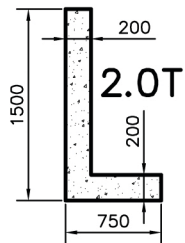
Retaining Wall Type 4



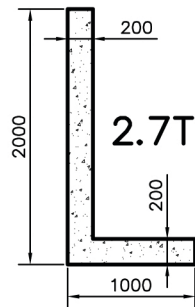
Freestanding Wall Type 1



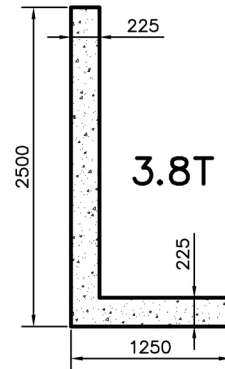
Freestanding Wall Type 2



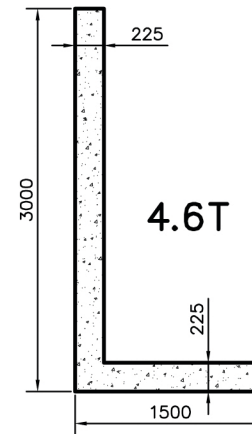
Retaining Wall Type 5



Retaining Wall Type 6




Retaining Wall Type 7



Retaining Wall Type 8

Self weights are for 1500mm wide retaining walls

Self weights are for 2000mm wide retaining walls

Revision	Description	By	Date
 Drumderry, Bundoo, Co. Wexford Ph: +353 5393 77720; fax: +353 5393 76330 info@drumderryagg.ie; www.drumderryagg.ie			
Dwg Title: Details Of Typical Retaining Walls			
Scale: 1:5	Date: 30/06/2010	Status: Production	
Drawn by: K.S.	Job No.: N/A	Dwg No.: 001	Rev.: A
<small>Drawings, Specifications, Design Calculations & Measurements supplied by Drumderry Precast/Drumderry Aggregate Ltd. are copyright and shall not be used, copied or loaned to third parties for the purposes of design or procurement of alternative quotations except with the written consent of Drumderry Precast/Drumderry Aggregate Ltd.</small>			